

Providing Every Unique In Dentistry

riton[®]

vhf
CREATING PERFECTION



Aidite[®]



SHINING 3D[®]

**CENDRES⁺
MÉTAUX**



SCANTIST 3D
DENTAL SCAN-SPRAY

mihmvogt

Point Implant

VOP
DENTAL EQUIPMENT MANUFACTURING



Smart Implant Solutions



AMMDENT



Pro Dent
Your Best Choice

ASIGA[®]



Contact Us



+971508368817 info@albawabagroup.net



+971566344335 <https://albawabagroup.net>



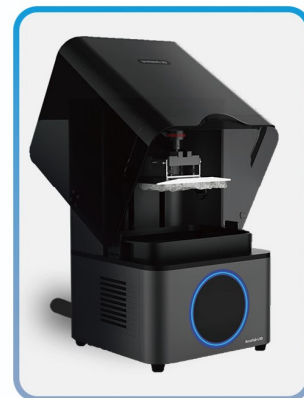
البوابة العلمية
ALBAWABA ALELMEYA
بوابةك الى العالم الرقمي
YOUR GATE TO DIGITAL WORLD



SHINING 3D®

AccuFab-L4D Dental 3D Printer

Lit Up For Dentistry



easy to use



Light weight



Ultra-accurate results



open source



automatic calibration



large print size



Printer Size

360 x 360 x 530 mm

Printer Weight

About 19 kg

printing size (x/y/z)

192 x 120 x 180 mm

Resolution

3840 x 2400(4K) Px

print speed

10-50 mm/h (depends on layer thickness and materials)

layer thickness

0.025/0.05/0.075/0.1 mm

Accuracy

± 50 µm

Connection

USB/Wi-Fi/Ethernet



+971566344335



+971508368817

For more information Whats app only



info@albawabagroup.net
Dubai - United Arab Emirates



SHINING 3D®

AccuFab D1s

UV LED	light source
405nm	wavelength
1920*1080	Resolution
144*81*160mm	printing size
±0.035mm	Accuracy
0.025/0.05/0.075/0.1mm	Layer Thickness
394*406 *755mm	Printer Size
30kg	Printer Weight



Wireless Plug and Play



economical



Smooth interface
and easy operation



open source



Various practical
applications



Ultra-accurate results



Dustproof design
Better heat distribution



The working life of the resin tank
compared to the previous version
is 400% longer. Productivity of 100,000 layers



A work algorithm that allows
the best use of printing space
and greater savings in time



Increased light efficiency by
and 10%; increase in contrast using 20%
the latest lens and glass technology



+971566344335



+971508368817

For more information Whats app only

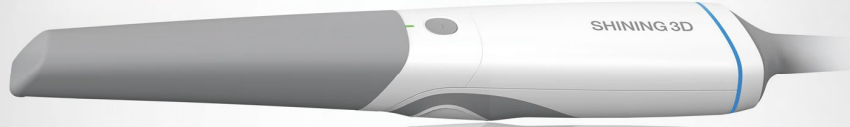


info@albawabagroup.net
Dubai - United Arab Emirates



SHINING 3D®

Aoralscan 3



Scan Speed Increased speed over the previous product 30% so that the scanning speed of each scan is 25 seconds

Accuracy Increased accuracy thanks to the improvement of the shooting mechanism also 30%.

Scan depth Increase the scanning depth to more than 22 and get a more accurate scan for soft tissues

User-friendly interface (UI) A seamless scanning experience for clinicians that enables even novices to get perfect scanning results

Automatically indeutifies (AI) function Automatically identify and filter data during scanning

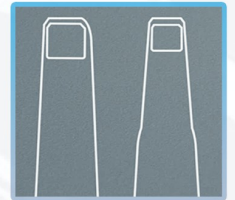
Motion sensing Motion sensor to reduce communication between doctor and computer

A program that facilitates communication with the informant, enabling me to draw the edges, inspect the fixation areas and check the occlusion before sending It also facilitates communication between the doctor and the patient through the possibility of printing the example directly on the 3D printer, dental alignment, and comprehensive oral health report recording.

Features of the new head: it contains two heads, small for children and large, and an increase in the depth of photography by 15%, and also

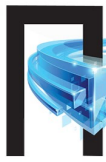
The possibility of sterilizing the head with a dry sterilizer once, with a built-in anti-steam system inside the mouth.

cart option was designed: (the laptop for the scanner is Cart option)



Standard scanner tip: 16 mm × 12 mm × 22 mm	scanning field
Mini scanner tip: 12 mm × 9 mm × 22 mm	scanning depth
-2-20 mm from exit surface of tip	Scanning
Non-contact scanner with structured light	Dimensions (length - width - height)
281 mm × 33 mm × 46 mm	weight
240 ± 10 g (without cables)	extension
STL, OBJ, PLY	Connection
USB 3.0	Power
12 V DC/3 A	





البوابة العلمية
ALBAWABA ALELMEYA
بوابة إلى العالم الرقمي
YOUR GATE TO DIGITAL WORLD

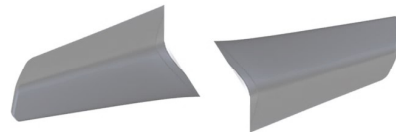
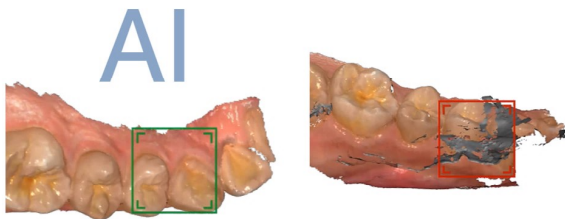


SHINING 3D®

Aoralscan INTRAORAL SCANNER



- easy to use
- Motion sensor feature
- artificial intelligence
- No annual subscription needed
- Reliability with accurate scanning and color accuracy and precise processing of the edges of the preparation
- Full scanning with occlusal and undercut analysis and automatic finish line creation



Autoclavable variable head

Flexibility to switch between two heads due to the difference in scanning angle (upper and lower)

LED light shows the working status of the scanner

Accuracy between microns **10-40**

High sensitivity to movement at **15 . speed FPS**

Uses: (orthodontics - veneer - inlay/onlay implants (bridges up to three pieces -

Compatible with all drivers - ability to export to (EXOCAD)



No need to use powder

Integrated system to treat the resulting mist ,from the exhalation process - there is no need for powder



+971566344335
For more information Whats app only



+971508368817



info@albawabagroup.net
Dubai - United Arab Emirates



SHINING 3D®

DS-MIX

Introducing the DS-MIX Scanner, the latest and most powerful version of shining 3d

With a new and modern design, it features two 5-megapixel cameras to give the most accurate

Details and at a record speed as it was developed from previous generations to depict all

Types of cases and non-fragmented examples, as the mechanism of scanning the jaws together has been developed

2x5 MP
Two 5-megapixel
cameras

Technical Specifications

USB 3,0

238x340x447mm

STL,PLY

AC 24 V

port 2x5 MP

dimensions <7um

extension Blue

Power. 7.5kg

Camera Resolution

Scan resolution

light source

weight



Ultra-fine details

Captures every detail like
the edges of the crowns
Braces and implant bodies
It can identify ores
textured body



Scan resolution

It depicts all kinds of cases and examples
Non-fragmentation also
developed scanning mechanism
Jaws together thanks to the two cameras
High Resolution 5 MP



Unique design

Modern and beautiful open design
It is very practical
and easy to set examples
It is removable and easy to maintain
and switch to cut



Smart Scan

Flexible user interface
and smart user experience
very comfortable



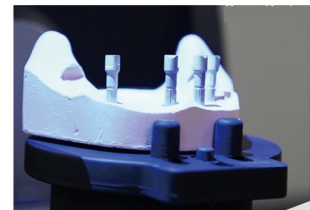
high compatibility

,Open system
files are exported in format
stl ,ply and that corresponds to
All cad cam systems



High efficiency

High speed about 13 seconds
The jaws have 6 seconds
seconds for 4 props 18



+971566344335



+971508368817

For more information Whats app only



info@albawabagroup.net
Dubai - United Arab Emirates



SHINING 3D® DS-EX-PRO C

new movable
head to expand the scanning field



In addition to the previous functions featured in the previous version, it has been added
New moving head to add scanning area or field
.With significantly improved scanning speed
The new version is equipped with a stand (All in one)
.To enable the user to scan both jaws at the same time

Scanner Features

- .working without segmentation examples <
- .Very high efficacy <
- .small size <
- .High scanning speed <
- .All-in-one scanner <
- .exports files in STL, OBJ format <
- High resolution camera, smart user interface and easy-to-use software <
- .Scan the entire status in one go <

Technical Specifications

1,3mega Pixels	Camera Resolution
<10um	Scan resolution
Blue	light source
5kg	the weight
USB 3,0	port
260x270x420mm	Scanner dimensions
STL,OBJ	Kharj suffix
AC 24 V	Power



Non-separated model



All in one



Texture



Impression





البوابة العلمية
ALBAWABA ALELMEYA
بوابة الى العالم الرقمي
YOUR GATE TO DIGITAL WORLD



SHINING 3D®

DS-EX



3D scanner is very practical in its size
Small, light weight and multi-functional
The amazing scanning speed is also very commensurate with
Data captured in restorations and orthodontics
Dental and implant cases

Scanner Features

- .work without segmentation examples
- .High efficacy
- .small size
- .High scanning speed
- .All-in-one scanner
- High resolution camera
- smart user interface
- .and easy-to-use program

1,3mega Pixels

<15um

Blue

5kg

USB 3,0

260x270x420mm

STL,OBJ

upper / lower jaw : 30 s

AC 24 V

Camera Resolution

Scan resolution

light source

the weight

port

Scanner dimensions

file extensions

shooting time

Power



Impression



Texture



Non-separated model



+971566344335



+971508368817

For more information Whats app only



info@albawabagroup.net
Dubai - United Arab Emirates